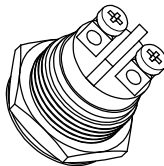
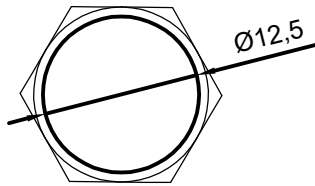
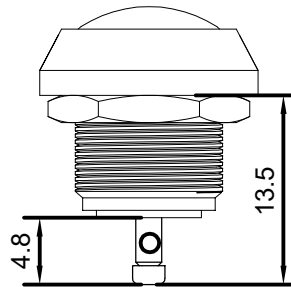
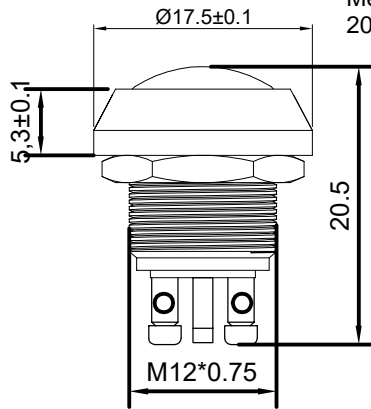
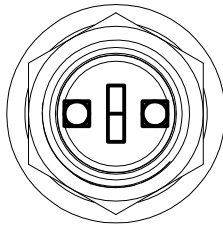
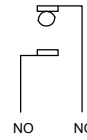


Technical parameters

1. Clean surface, uniform gloss;
2. Rated voltage: resistive current 3A / 250VAC;
3. LED rated load: no light
4. Working environment temperature: -20℃-+55℃
- ;
5. Action form: self-resetting
6. Action stroke: 2.5mm;
7. Action force: about 3N;
8. Wiring form: matching connector insertion;
- Welding wire, pay attention to welding time and temperature;
9. Tightening torque: 5-14N.m;
10. Switch combination: 1NO;
11. Appearance material: Button: 304 stainless steel
- Casing: brass nickel-plated
- Base: high flame retardant environmentally friendly PA66;
- Contact: silver contact;
- Pin: H65 silver-plated.
12. Installation size: opening diameter 12.2mm;
- Panel thickness $\leq 12\text{mm}$.
13. Waterproof grade: IP65;
14. Protection grade: IK10;
15. LED lamp bead service life: 40000h;
16. Contact resistance: $\leq 50\text{m}$;
17. Insulation resistance: $\geq 100\text{M}$;
18. Dielectric strength: 1000VACmin;
19. Service life: Electrical life: 50000
- Mechanical life: 500000
- 20: Product certification: CE RoHS CQC

Monochrome schematic



All line sizes are in mm ,
cannot be dimensioned
from drawings.

Quadrant



SWITCHTRONIX

Name

IT4A12M