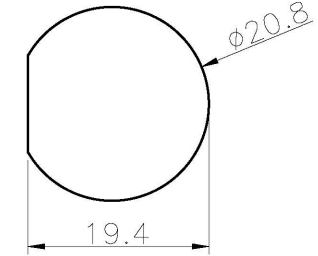
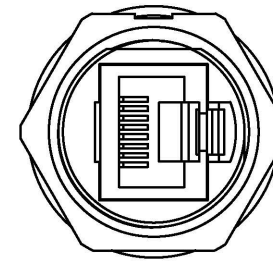
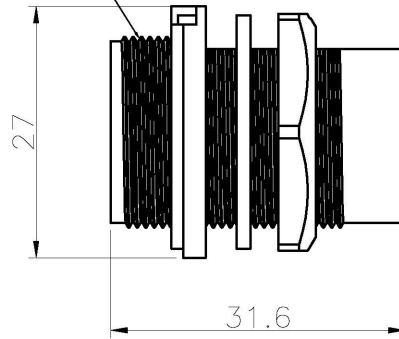
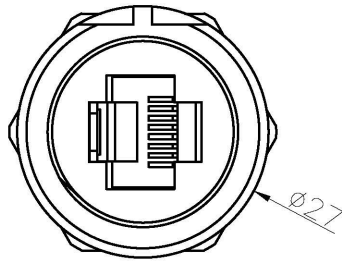
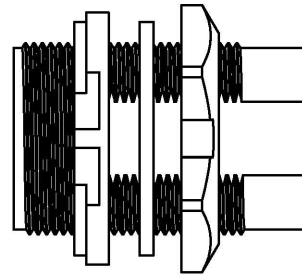


Rev.	Change Description	ECN #	Date

13/16"-28UNS

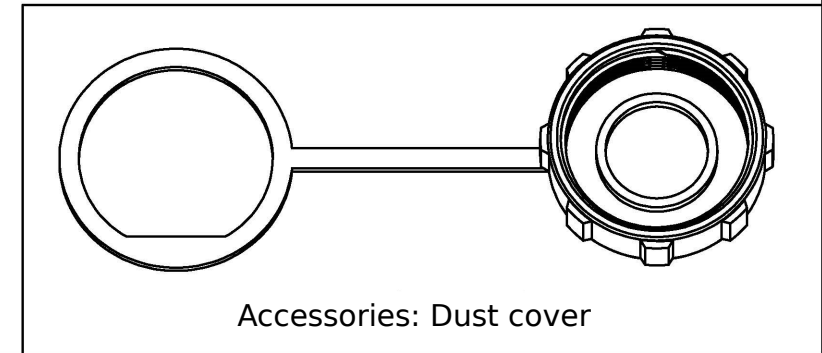


Mounting hole



Technical parameters:

transmission rate	Compliant with TIA/EIA 568B Cat6A class D and ISO/IED 11801
plating type	15um
Waterproof	IP67
Contact resistance	≦20mΩ
Insulation resistance	≧500MΩ at DC500V
Frequency	≧AC 1000V / 1min
Salt spray corrotion	48 Hours
POE	60W / 2A



Accessories: Dust cover

7	E13 dust cap waterproof 19.75*1.5	Silica gel	Black	pc	1
6	E13 screw thread dust cover	Plastic	Black	pc	1
5	E10 dust cap insert	PP	Black	pc	1
4	E13 board front and rear waterproof 24.8*1.5	Silica gel	Black	pc	1
3	E13 Flange nuts	PA66	Black	pc	1
2	RJ45 board front body	PA66	Black	pc	1
1	RJ45 dual network port	RJ 网口+PCB板	Gold plated	pc	1
No.	Specification	Material	Treat	Unit	Q'ty

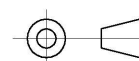
GENERAL TOLERANCE (UNLESS SPECIFIED)

≤10 ±0.1

<10~≤20 ±0.2

<20~≤50 ±0.5

Angle ±1°



THIRD ANGLE

DWN

CHK

APVD

UNIT
MM

SIZE
A4

REV
A

SHEET
1 OF 1

TITLE

4

PART NO

DRAWING NO