

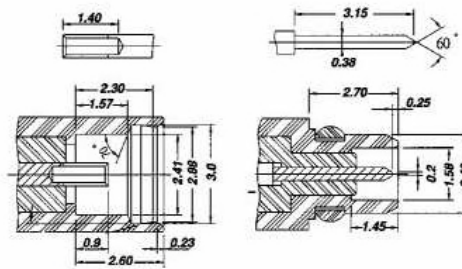
CTDA002

RoHS: 

### Description

- IMPEDANCE 50  $\Omega$  ,FREQUENCY RANGE 0-6GHz ,VOLTAGE RATING AC 170V ,WITHSTANDING VOLTAGE AC500V ONE MINUTE ,CONTACT RESISTANCE 5.0m $\Omega$  MAX ,INSULATION RESISTANCE 1000M  $\Omega$  MIN AT DC 500V
- Weight: 0.89
- Size L x W x H (mm): 13.1\* 0.4\* 0.4

MMCX series



Electrical specifications :

Connector series	Impedance	Frequency range	Voltage rating	Withstanding voltage	Contact resistance	Insulation resistance
MMCX	50 $\Omega$	0 - 6 GHz	AC 170V	AC 500V one minute	5.0m $\Omega$ max	1000M $\Omega$ min at DC 500V

