

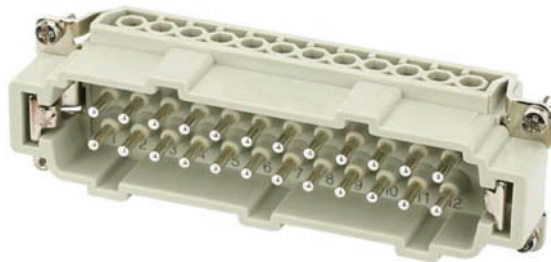
Art.-No.	70MH-ES024-GS03020
Name	B24 Male 24-pole Screw terminal



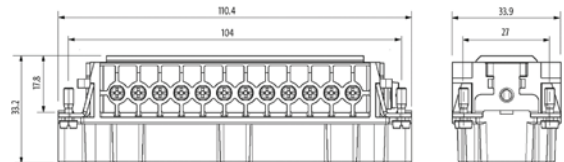
COMMENTS

Technical data will be only guaranteed with Murrelektronik components.

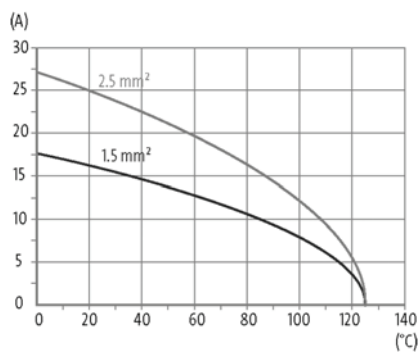
Product picture



Dimension drawing



De-rating curve



Approvals



Technical Data	
No. of poles	24 + PE
Connection	Screw terminal
Connection cross section	0.5...2.5 mm ² (AWG 20...14)
Wire-Ø incl. isolation	max. 3.6 mm
Stripping length	7.5 mm
Operating voltage	500 V AC/DC
Operating current	16 A
Over voltage category	III
Material group	IIIb
Rated surge voltage	6 kV
Current load capacity	see derating curve
Contact resistance	≤ 5 mOhm
Isolation resistance	≥ 10 ⁸ Ohm
Mating cycles	min. 500
Insertion and withdrawal force	< 200 N
Holding force	> 150 N
Tightening torque (clamp screw)	min. 0.5 Nm

General data	
Type	Male
Size	B24
Pollution Degree	3
Dimensions H × W × D	33.2×33.9×110.4 mm
Material (contact carrier)	PA GF
Material (contact)	Brass
Material (contact surface)	Ag
Flammability class	V-0 (acc. to UL 94)
Climatic category	40/125/10
Temperature range	-40...+125 °C

Release	
Compiled	30.11.2016
Index	a