

1U 3100 Series DVR Quick Start Guide

www.electronicaembajadores.com

Version 1.0

Welcome

Thank you for purchasing our DVR!

This quick start guide will help you become familiar with our DVR in a very short time.

Before installation and operation, please read the following safeguard and warning carefully!

Important Safeguard and Warning

- All installation and operation here should conform to your local electrical safety codes.
- We assume no liability or responsibility for all the fires or electrical shock caused by improper handling or installation.
- We are not liable for any problems caused by unauthorized modifications or attempted repair.
- Improper battery use may result in fire, explosion, or personal injury!
- When replace the battery, please make sure you are using the same model!

Note: All the installation and operations here should conform to your local electric safety rules.

1. Check Unpacked DVR

When you receive the DVR from the forwarding agent, please check whether there is any visible damage. The protective materials used for the package of the DVR can protect most accidental clashes during transportation. Then you can open the box to check the accessories.

Please check the items in accordance with the list on the warranty card (Remote control is optional). Finally you can remove the protective film of the DVR.

2. About Front Panel and Rear Panel

For detailed information of the function keys in the front panel and the ports in the rear panel, please refer to the *User's Manual* included in the resource CD.

The model in the front panel is very important; please check according to your purchase order.

The label in the rear panel is very important too. Usually we need you to represent the serial number when we provide the service after sales.

3. HDD Installation

This series DVR has only one SATA HDD. Please use HDD of 7200rpm or higher.

You can refer to the *User's Manual* for recommended HDD brand.

Please follow the instructions below to install hard disk.



1. Loosen the screws of the upper cover and side panel.	2. Fix four screws in the HDD (Turn just three rounds).	3. Place the HDD in accordance with the four holes in the bottom.
---	---	---



4. Turn the device upside down and then turn the screws in firmly.



5. Fix the HDD firmly.



6. Connect the HDD cable and power cable.



7. Put the cover in accordance with the clip and then place the upper cover back.



8. Secure the screws in the rear panel and the side panel.

Note:

- You can connect the HDD data cable and the power cable first and then fix the HDD in the device.
- Please pay attention to the front cover. It adopts the vertical sliding design. You need to push the clip first and then put down.

4. Front Panel

The front panel is shown as in Figure 0-1.

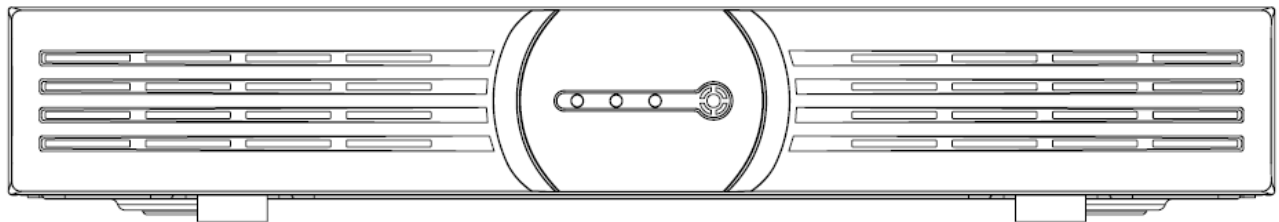


Figure 0-1

Please refer to the following sheet for detailed information.

Icon	Name	Function
	Network status indication light	The red light becomes on when the network connection is not proper.
	Power status indication light	The red light is on when the power connection is proper.
	HDD status indication light	The red light is on when the HDD malfunction occurred.

5. Rear Panel

Here we take the 4-channel series product rear panel as an example. See Figure 0-2.

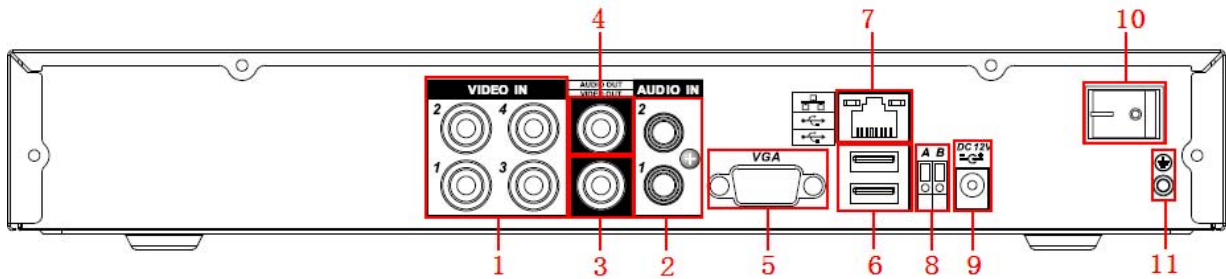


Figure 0-2

Please refer to the following sheet for detailed information.

SN	Name	SN	Name	SN	Name
1	Video input	2	Audio input	3	Video CVBS output
4	Audio output	5	Video VGA output	6	USB port
7	Network port	8	RS485 port	9	Power input port
10	Power button	11	GND port		

6. Local Login

After system booted up, default video display is in multiple-window mode.

Click Enter or left click mouse, you can see the login interface. See Figure 0-3.

System consists of four accounts:

- **Username:** admin. **Password:** admin. (administrator, local and network)
- **Username:** 888888. **Password:** 888888. (administrator, local only)
- **Username:** 666666. **Passwords:** 666666 (Lower authority user who can only monitor, playback, backup and etc.)
- Username: default. Password: default (hidden user)

Note:

For security reason, please modify password after you first login.

Within 30 minutes, three times login failure will result in system alarm and five times login failure will result in account lock!



Figure 0-3

7. Web

Open IE and input DVR address in the address column. For example, if your DVR IP is 10.10.3.16, then please input http:// 10.10.3.16 in IE address column.

System pops up warning information to ask you whether install webrec.cab control or not. Please click yes button.

If you can't download the ActiveX file, please modify your IE security setup.

After installation, the interface is shown as below. See Figure 0-4.

Please input your user name and password.

Default factory name is admin and password is admin.

Note: For security reasons, please modify your password after you first login.

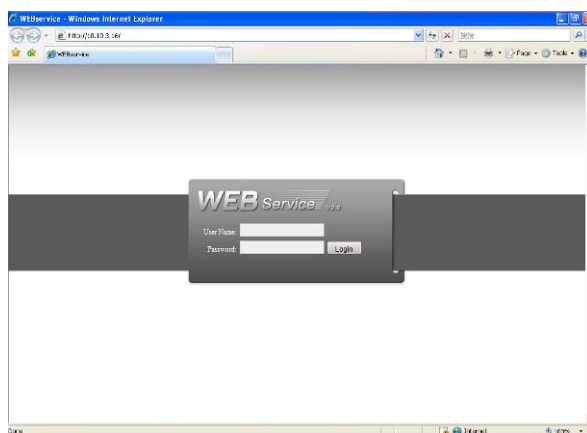


Figure 0-4

For detailed operation information, please refer to the *User's Manual* included in the resources CD.

www.electronicaembajadores.com

Appendix Toxic or Hazardous Materials or Elements

Component Name	Toxic or Hazardous Materials or Elements					
	Pb	Hg	Cd	Cr VI	PBB	PBDE
Sheet Metal(Case)	○	○	○	○	○	○
Plastic Parts (Panel)	○	○	○	○	○	○
Circuit Board	○	○	○	○	○	○
Fastener	○	○	○	○	○	○
Wire and Cable/AC Adapter	○	○	○	○	○	○
Packing Material	○	○	○	○	○	○
Accessories	○	○	○	○	○	○

Note

O: Indicates that the concentration of the hazardous substance in all homogeneous materials in the parts is below the relevant threshold of the SJ/T11363-2006 standard.

X: Indicates that the concentration of the hazardous substance of at least one of all homogeneous materials in the parts is above the relevant threshold of the SJ/T11363-2006 standard. During the environmental-friendly use period (EFUP) period, the toxic or hazardous substance or elements contained in products will not leak or mutate so that the use of these (substances or elements) will not result in any severe environmental pollution, any bodily injury or damage to any assets. The consumer is not authorized to process such kind of substances or elements, please return to the corresponding local authorities to process according to your local government statutes

Note

- For detailed operation introduction, please refer to our resource CD included in your package for electronic version of the *User's Manual*.
- This quick start guide is for reference only. Slight difference may be found in the user interface.
- All the designs and software here are subject to change without prior written notice.
- If there is any uncertainty or controversy, please refer to the final explanation of us.
- Please visit our website or contact your local service engineer for more information.