

## **Features and Benefits**

Turn your Raspberry Pi into a touch screen tablet, infotainment system, or standalone device.

Truly Interactive - the latest software drivers will support a virtual 'on screen' keyboard, so there is no need to plug in a keyboard and mouse.

Make your own 'Internet of Things' (IoT) devices including a visual display. Simply connect your Raspberry Pi, develop a Python script to interact with the display, and you're ready to create your own home automation devices with touch screen capability.

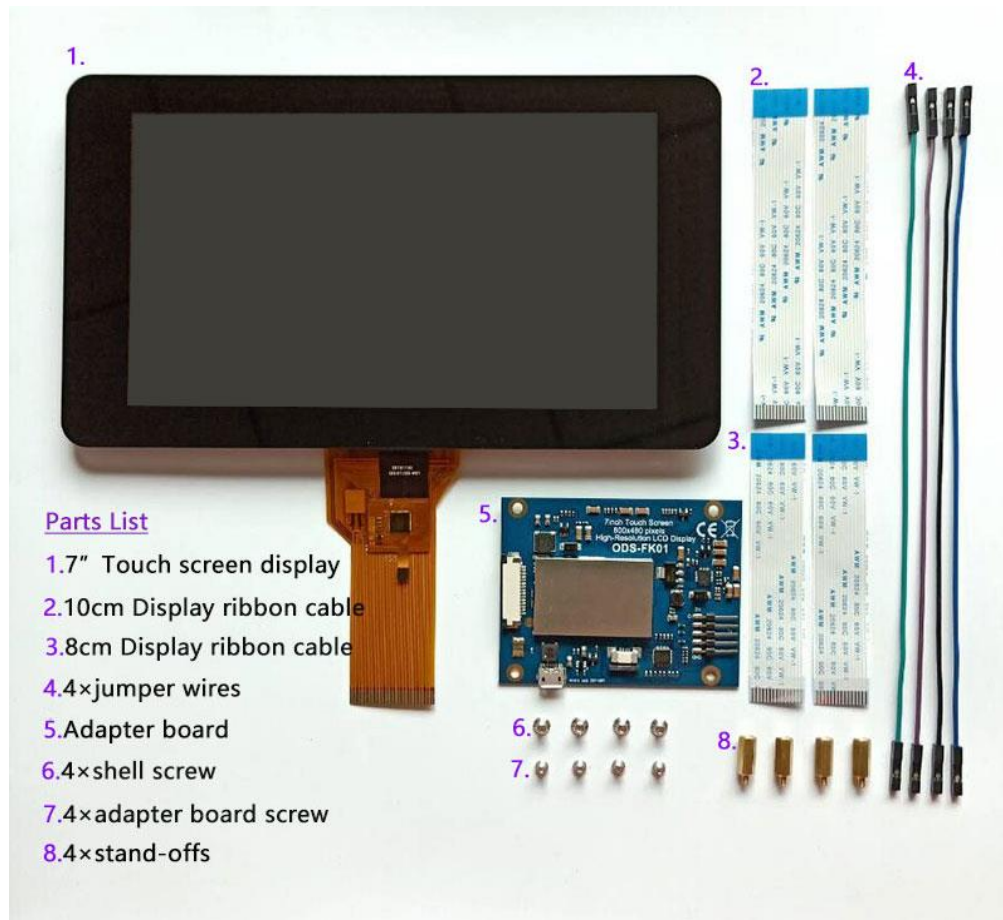
A range of educational software and programs available on the Raspberry Pi will be touch enabled, making learning and programming easier on the Raspberry Pi.

### **Kit Contents:**

- 7" Touchscreen Display
- Adapter Board
- DSI Ribbon cable
- 4 x stand-offs and screws (used to mount the adapter board and Raspberry Pi board to the back of the display)
- 4 x jumper wires (used to connect the power from the Adapter Board and the GPIO pins on the Pi so the 2Amp power is shared across both units)

**NOTE:** THE RASPBERRY PI BOARD AND POWER SUPPLY ARE NOT INCLUDED.

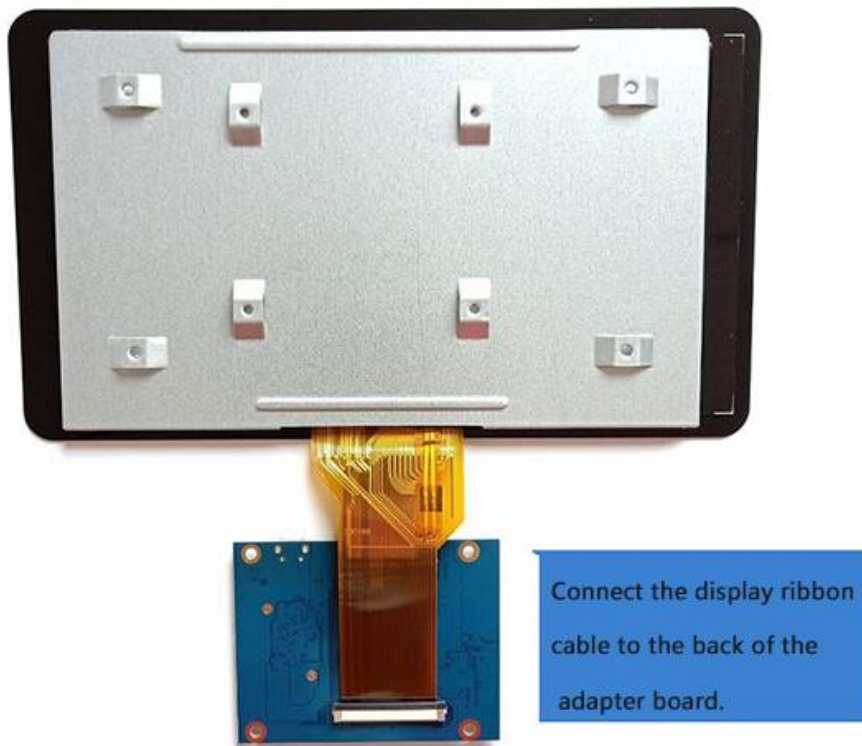
## Step 1 :



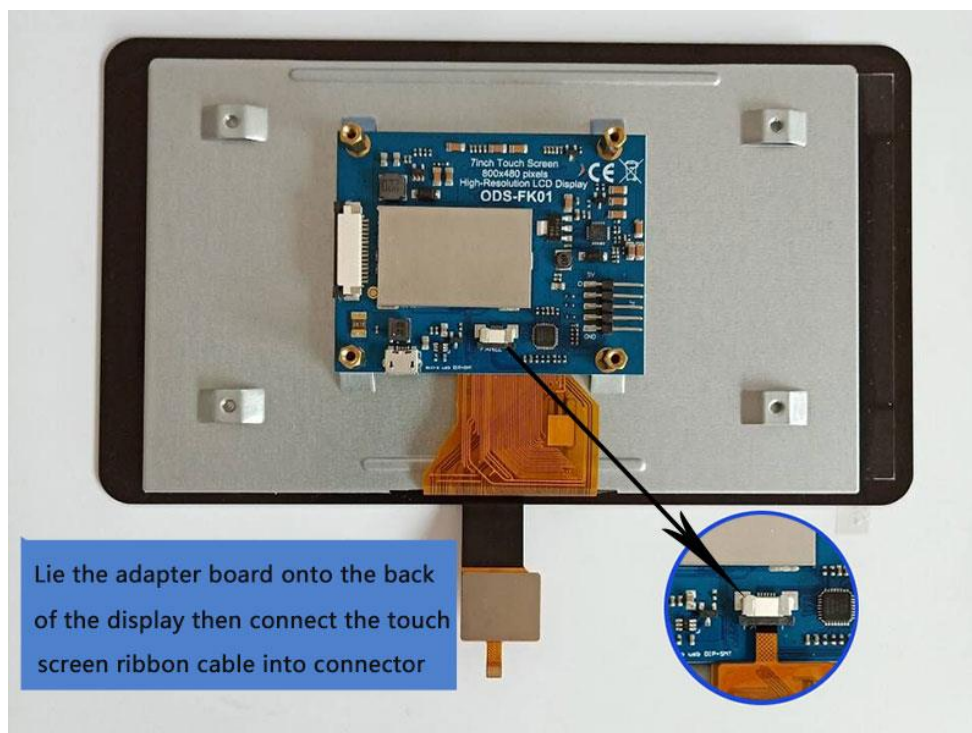
### Technical Specification:

- 7" Touchscreen Display
  - Screen Dimensions: 194mm x 110mm x 20mm (including standoffs)
  - Viewable screen size: 155mm x 86mm
  - Screen Resolution 800 x 480 pixels
  - 10 finger capacitive touch
- ❖ Connects to the Raspberry Pi board using a ribbon cable connected to the DSI port;
  - ❖ Adapter board is used to power the display and convert the parallel signals from the display to the serial (DSI) port on the Raspberry Pi;
  - ❖ Will require the latest version of Raspbian OS to operate correctly.

## Step 2:

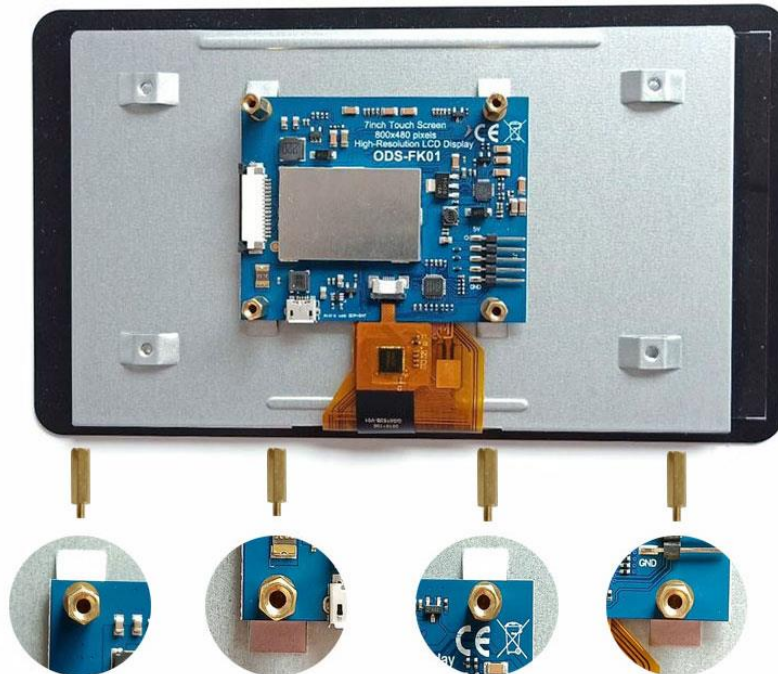


## Step 3:



## Step 4:

Attach the 4× stand-offs & screw them through the adapter board into the back of the display



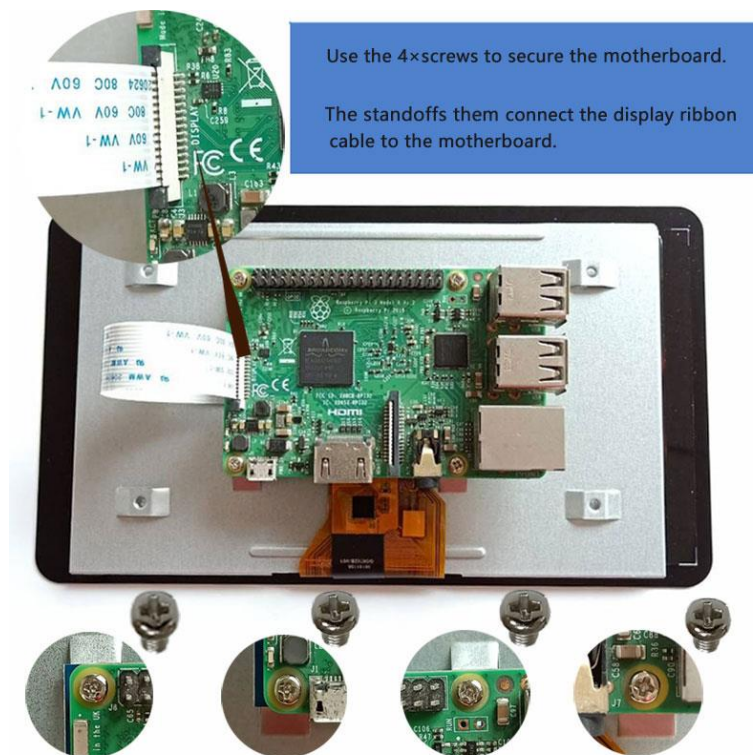
## Step 5:

Attach the display ribbon cable to the Adapter Board

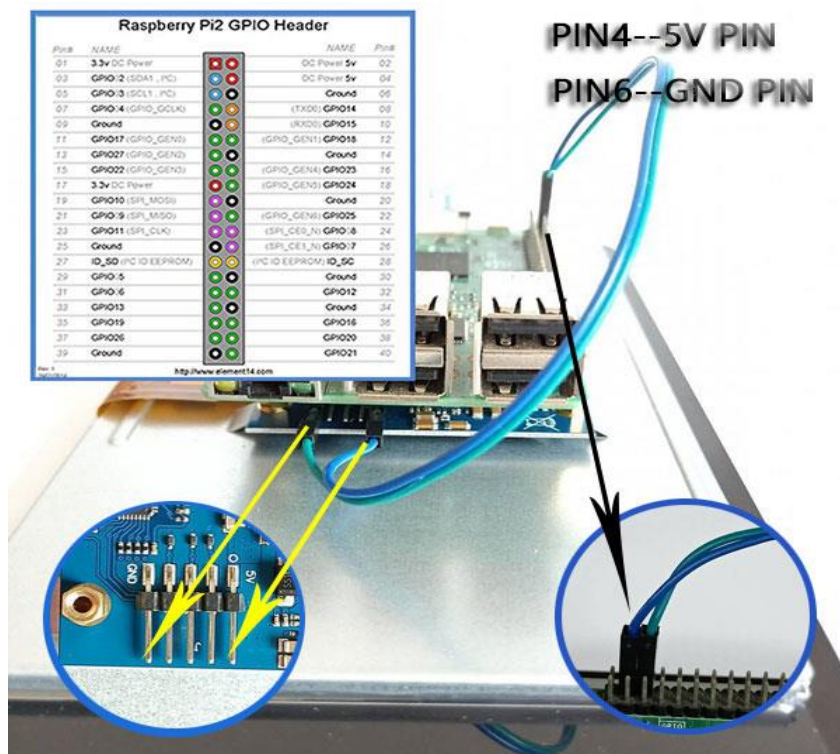




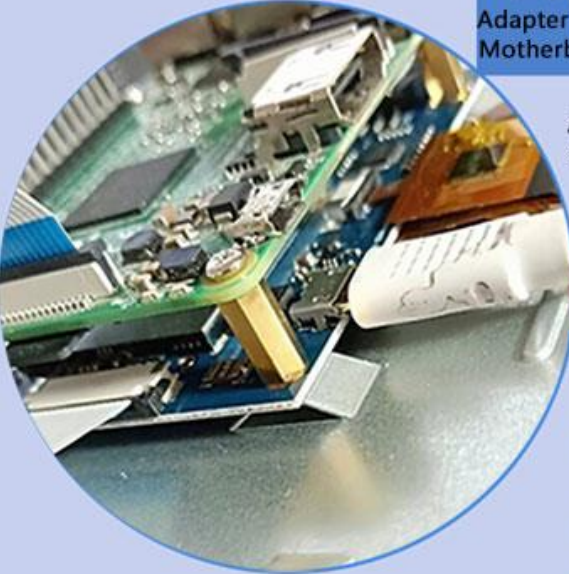
## Step 6:



## Step 7:



## Step 8:



Insert a Micro SD Card into the Motherboard with the Latest version of installed. Then attach a 2Amp Power Supply to the Adapter Board to power the display and Motherboard.

Alternative methods of powering the touchscreen display

Connect a MicroUSB cable from the 'PWR OUT' port on the adapter board to the 'PWR IN' MicroUSB port on the motherboard. Then connect a 2Amp external power supply to the 'PWR IN' port on the adapter board.

Or

Power both boards independently using separate 2Amp external power suppliers connected to the 'PWR IN' ports on both the Motherboard and the Adapter board.

## Step 9:

### Operating Software

Now that you've assembled your Touchscreen Display ,you will need to download and install the latest version of the Raspbian Operating System - available to download from the Raspberry Pi Foundation at: <https://www.raspberrypi.org/downloads/>

Once installed,type  
`sudo apt-get update`  
and  
`sudo apt-get upgrade`

(in that order) to install  
all of the latest drivers and  
software to support the  
Touchscreen Display

