



Size : 84*57*37.5mm

Features:

- Universal full range AC input power
- Built-in EMI filter, tiny ripple
- Protections: short circuit/overload/over voltage
- Cooling by free air convection
- 43,000 hours of continuous operation at 25 °C
- 100% full load burn-in test
- Compliance to IEC/EN60335-1 (PD3) and IEC/EN61558-1,2-16 suitable for home appliance
- 2 years warranty

SPECIFICATION



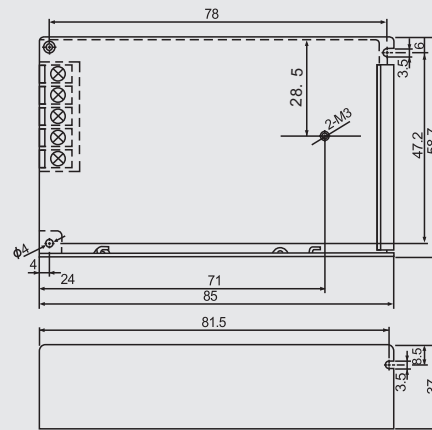
Model		SA5C025W05	SA5C025W12	SA5C025W15	SA5C025W24
OUTPUT	DC VOLTAGE	5V	12V	15V	24V
	RATED CURRENT	5A	2.1A	1.7A	1.05A
	CURRENT RANGE	0-5A	0-2.1A	0-1.7A	0-1.05A
	RATED POWER	25W	25W	25W	25W
	RIPPLE&NOISE(Max)	50mVp-p	50mVp-p	80mVp	80mVp-p
	VOLTAGE ADJ.RANGE	4.5 ~ 5.5V	10.8 ~ 13.2V	13.5 ~ 16.5V	21.6 ~ 26.4V
	VOLTAGE TOLERANCE	±1.5%	±1.5%	±1.0%	±1.0%
	LINE REGULATION	±0.5%	±0.5%	±0.5%	±0.5%
	LOAD REGULATION	±1.5%	±1.5%	±1.5%	±1.0%
	SETUP,RISE TIME	200ms、20ms			
INPUT	HOLD UP TIME (Typ.)	30ms full load			
	VOLTAGE RANGE	100~264VAC 47~63HZ or 235~373VDC			
	FREQUENCY RANGE	47 ~ 63Hz			
	EFFICIENCY(Typ.)	75%	78%	78%	81%
	AC CURRENT(Typ.)	0.35A/230VAC			
PROTECTION	INRUSH CURRENT(Typ.)	30A/230VAC			
	LEAKAGE CURRENT	<0.5mA / 240VAC			
ENVIRONMENT	OVERLOAD	110 ~ 135% rated output power Protection type:Hiccup mode,recovers automatically after fault condition is removed			
	WORKING TEMP.	-10 ~ +60°C (Refer to "derating curve")			
SAFETY	WORKING HUMIDITY	20 ~ 90% RH non-condensing			
	STORAGE TEMP.,HUMIDITY	-20 ~ +85°C, 10% ~ 95% RH			
	TEMP.COEFFICIENT	±0.03%/°C (0 ~ 50°C)			
OTHERS	VIBRATION	10 ~ 500Hz, 2G 10 min/1cycle,60min.each X、Y、Z axes			
	SAFETY STANDARDS	GB4943.1, EN 60950.1 APPROVED			
	WITHSTAND VOLTAGE	I/P-O/P:1.5KVAC I/P-FG:1.5KVAC O/P-FG:0.5KVAC			
	ISOLATION RESISTANCE	I/P-O/P, I/P-FG, O/P-FG:100M Ohms / 500VDC / 25 °C/ 70% RH			
	EMC EMISSION	Compliance to EN61000-3-2:2014/EN61000-3-3:2013			
NOTE	EMC IMMUNITY	Compliance to EN 55032:2015/EN55035:2017/60950-1			
	MTBF	≥327.9K hrs MIL-HDBK-217F(25°C)			
	DIMENSION	L84*W57*H37.5mm			
PACKING		0.16KG/PCS,80PCS/13KG/CTN,41*27.5*25CM			
		1. All parameters NOT specially mentioned are measured at 230VAC input, rated load and 25°C of ambient temperature. 2. Ripple&noise are measured at 20MHz of bandwidth by using a 12 "twisted pair -wire terminated with a 0.1uf and 47uf parallel capacitors. 3. Tolerance:includes set up tolerance,line regulation and load regulation. 4. Derating output is required under low input voltage. Please refer to the derating curve for details. 5. The power supply should be considered as a part of the components in the system. All EMC tests will test the test samples on a metal iron plate with a thickness of 1mm, a length of 360mm * width of 360mm.			

Mechanical Specification

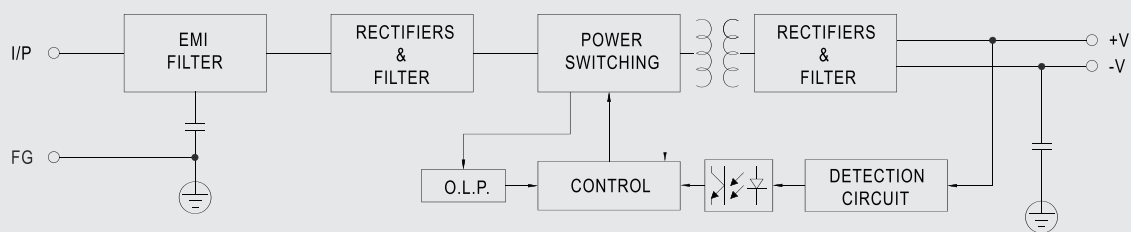


Terminal Pin No.Assignment:

Pin No.	Assignment	Pin No.	Assignment
1	AC/L	4	DC OUTPUT -V
2	AC/N	5	DC OUTPUT +V
3	FG		



Block Diagram



Derating Curve

Static Characteristic

