


PCB TERMINAL BLOCKS

5.08mm DIN Rail Mounted Inverted/Reverse

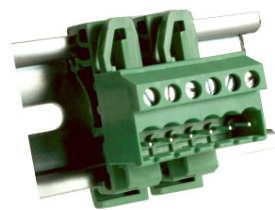
- Horizontal & vertical orientations
- Polarized moldings
- Can be reversed on DIN clips
- Also available in 5mm pitch
- Molded in green UL94-V0 flame retardant PA 66
- 2.5mm² (28-14AWG)
-  approved
- 6-12 poles standard (13-24 also available)

SPECIFICATION

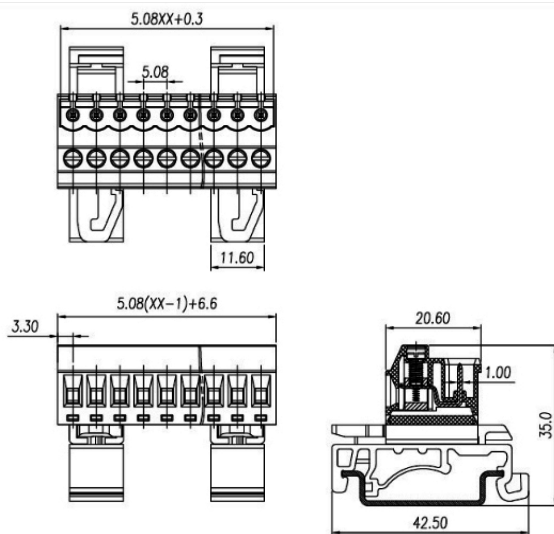
Rating	UL=15A/300V IEC 20A/450V
Insulation resistance	500MΩ/500V
Withstand Voltage	AC2000V/1min
Contact Resistance	20mΩ (max)
Working Temperature	-40°C to 105+°C
Mouldings	UL94-V0 Flame retardant PA66
Pin/Terminal	Brass, Tin plated
Rising Clamp	Brass, nickel plated
Screw/Torque	M3 Steel, zinc plated 0.5Nm

DIN Rail Male Vertical Connector

TYPE NO.	POLES	LENGTH	CTBPD96VJ
CTBPD96VJ/6	6	32.0mm	
CTBPD96VJ/7	7	37.1mm	
CTBPD96VJ/8	8	42.2mm	
CTBPD96VJ/9	9	47.2mm	
CTBPD96VJ/10	10	52.3mm	
CTBPD96VJ/11	11	57.4mm	
CTBPD96VJ/12	12	62.5mm	

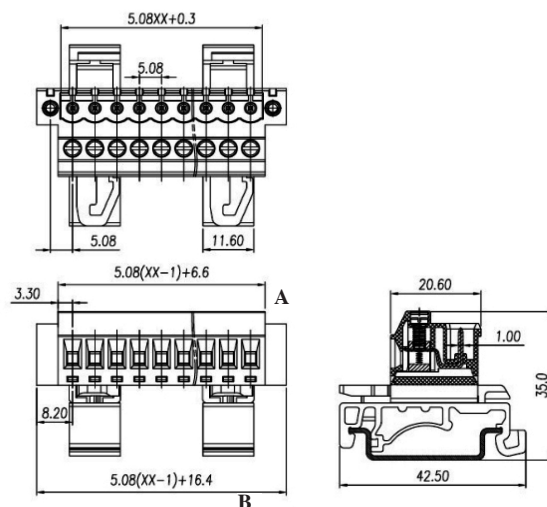


Excludes DIN Rail



DIN Rail Male Vertical Connector, Flanged

TYPE NO.	POLES	LENGTH A	LENGTH B	CTBPD96VJ/FL
CTBPD96VJ/6FL	6	32.0mm	41.8mm	
CTBPD96VJ/7FL	7	37.1mm	46.9mm	
CTBPD96VJ/8FL	8	42.2mm	52.0mm	
CTBPD96VJ/9FL	9	47.2mm	57.0mm	
CTBPD96VJ/10FL	10	52.3mm	62.1mm	
CTBPD96VJ/11FL	11	57.4mm	67.2mm	
CTBPD96VJ/12FL	12	62.5mm	72.3mm	



PCB
TERMINAL
BLOCKS

INTER-
CONNECTION

FUSES &
FUSE-
HOLDERS

LEDs &
INDICATORS

MINIATURE
SWITCHES

LIMIT &
SAFETY
SWITCHES

CONTROL
PRODUCTS

INTERFACE
MODULES &
SUPPORTS

RELAY
BASES

DIN RAIL
ENCLOSURES

BATTERIES

SOLAR
PANELS

TRANS-
FORMERS